

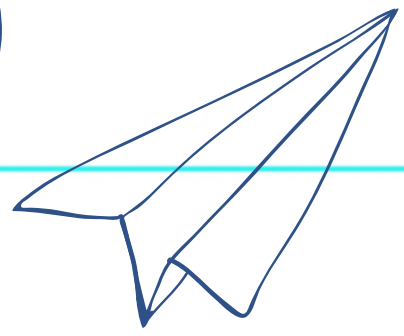
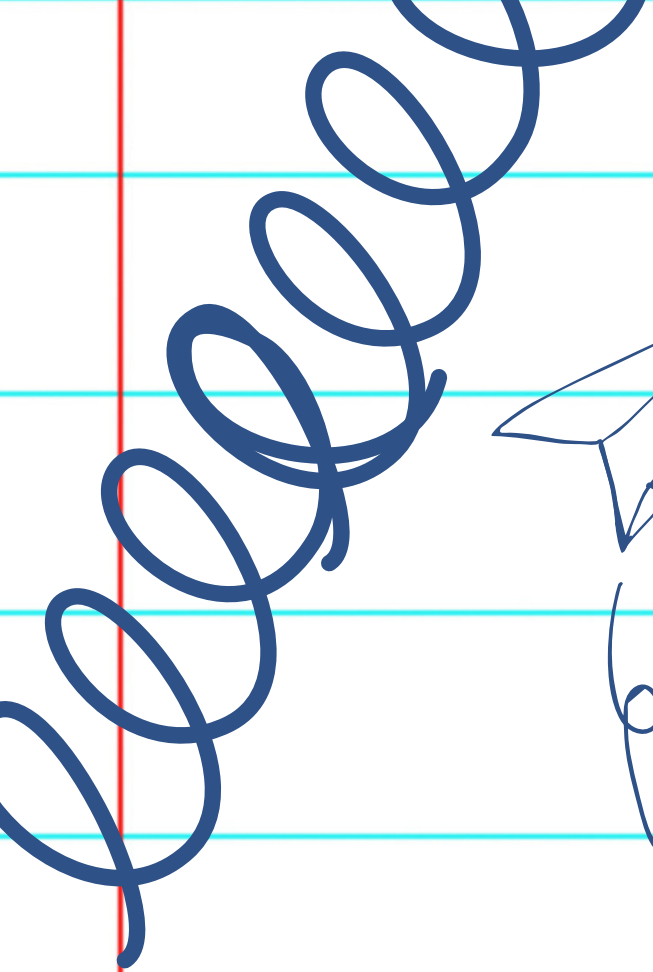
TOWERING BOOKSTACKS & HEAVY DOORS:

LESSONS ON PERFORMING ACCESSIBILITY
AUDITS IN ACADEMIC LIBRARIES

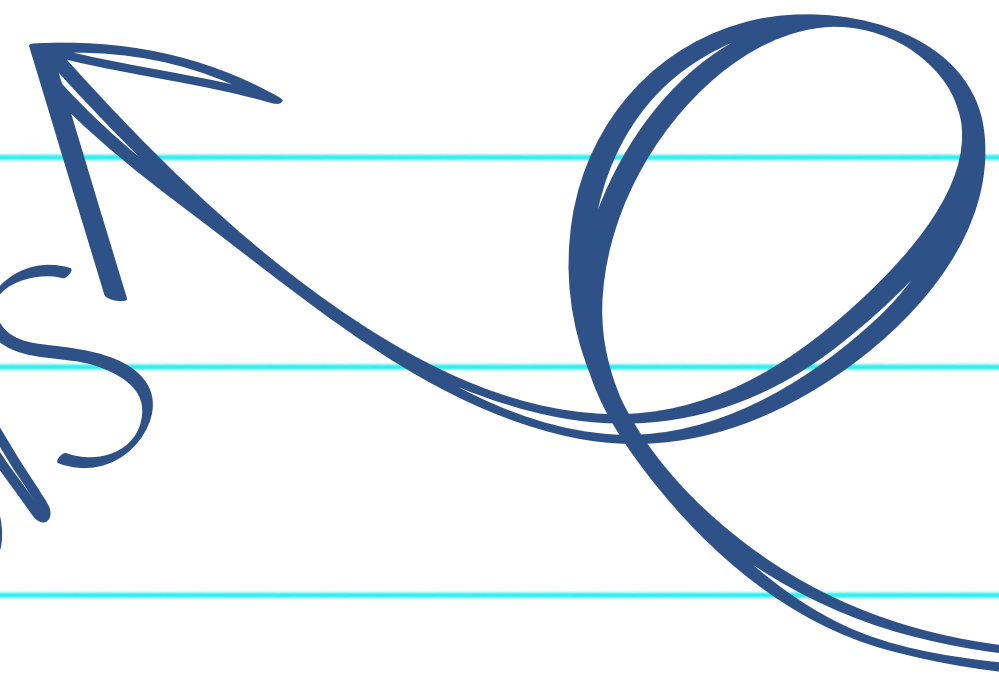
ABBIE STEUHM, MLIS



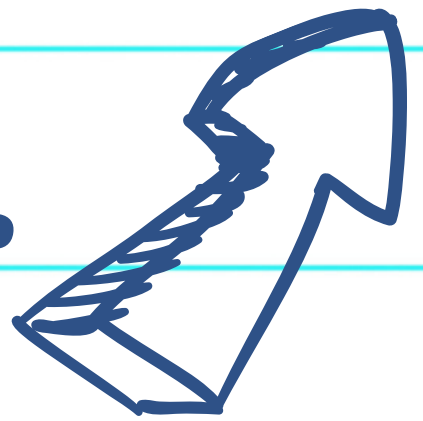
2022 Accessibility Evaluation of Ulowa's Main Library



Ideas



#####



PREPPING FOR THE WALKTHROUGH

PRIORITIES FOR ACCESSIBILITY BY THE ADA

01 Accessible approach & entrance

02 Access to goods and services

03 Access to public toilet rooms

04 Access to other items such as water fountains

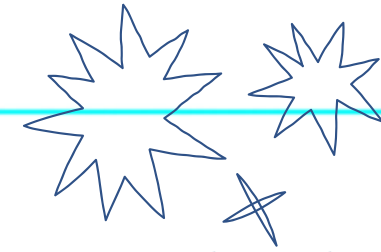
UNIVERSAL DESIGN PRINCIPLES

EQUITABLE USE



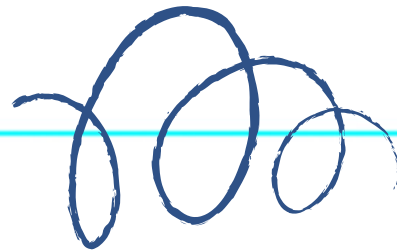
Design is useful to people with diverse disabilities.

FLEXIBILITY IN USE



Design accommodates a wide range of preferences and abilities.

LOW PHYSICAL EFFORT



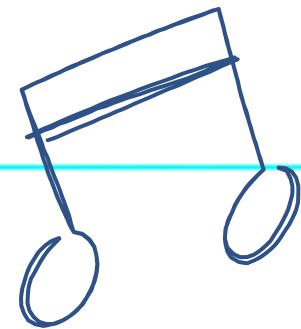
Elaborate on the featured statistic.

SIMPLE & INTUITIVE USE



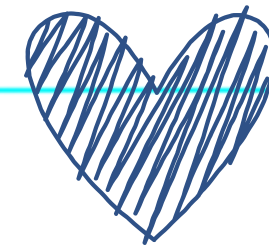
Design is easy to understand regardless of the user.

PERCEPTIBLE INFORMATION



Design communicates necessary information effectively to the user.

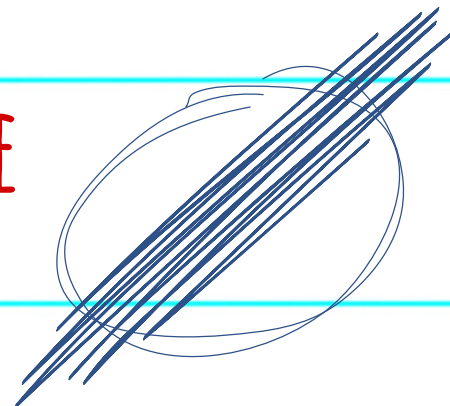
TOLERANCE FOR ERROR



Design minimizes hazards and adverse consequences.

SIZE AND SPACE FOR APPROACH & USE

Appropriate space and size is provided.

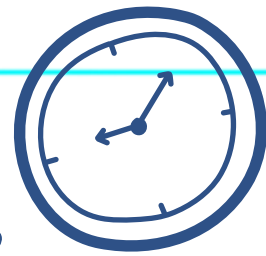


GATHERING A GROUP OF VOLUNTEERS

Hand out the invitation through various channels like Discord servers & social media.

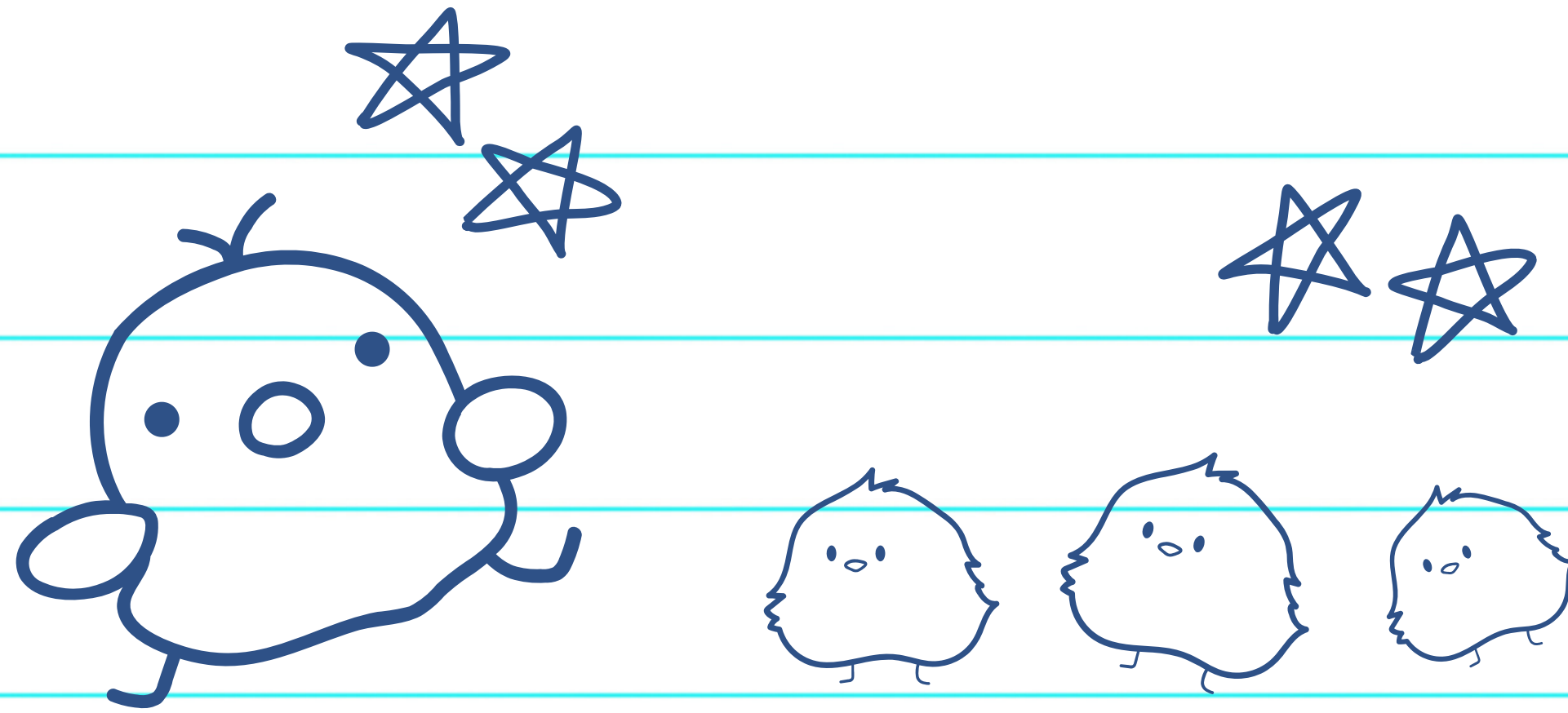


Plan a date and time.

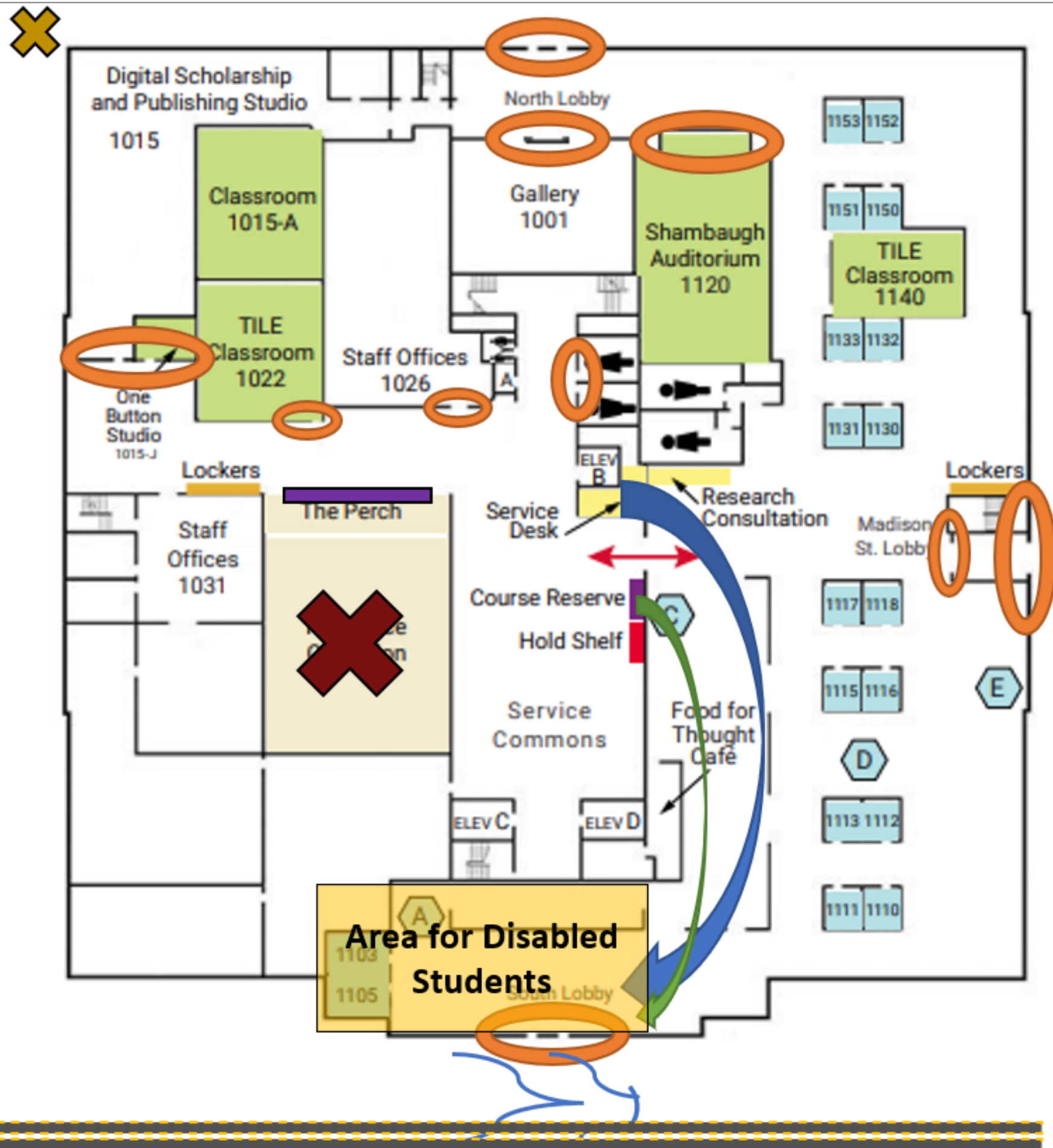


* Carpool and incentivize!



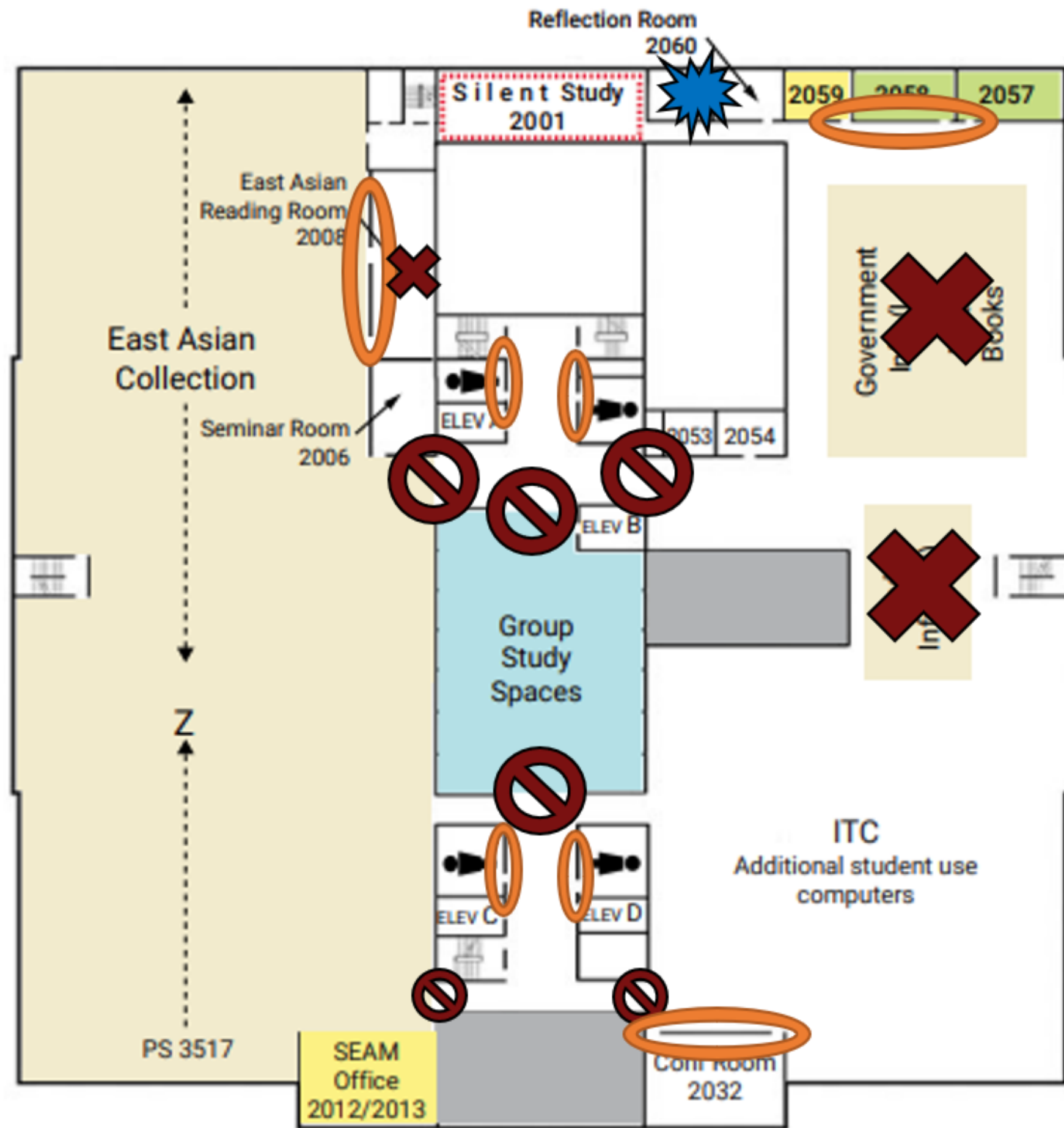


PERFORMING THE EVALUATION



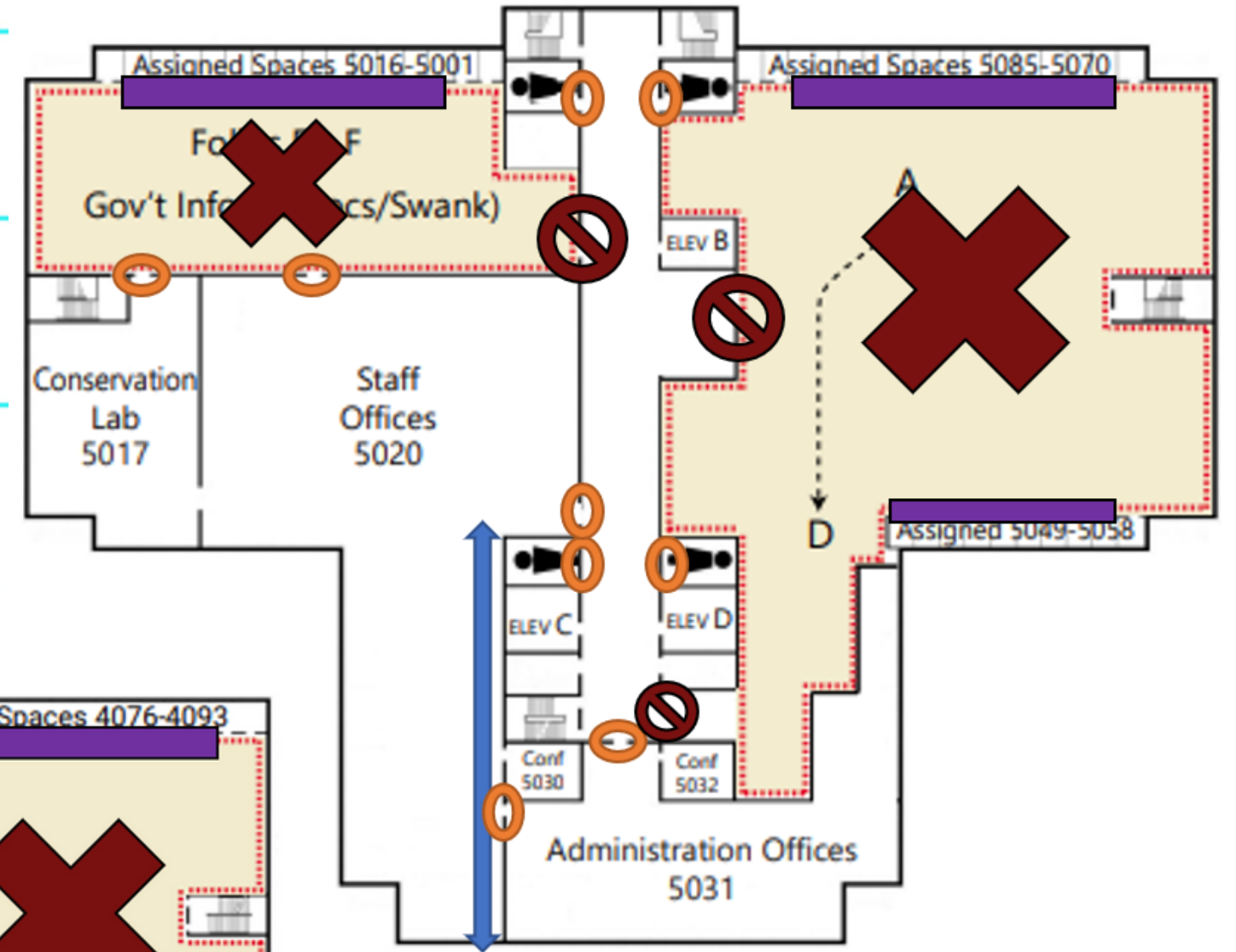
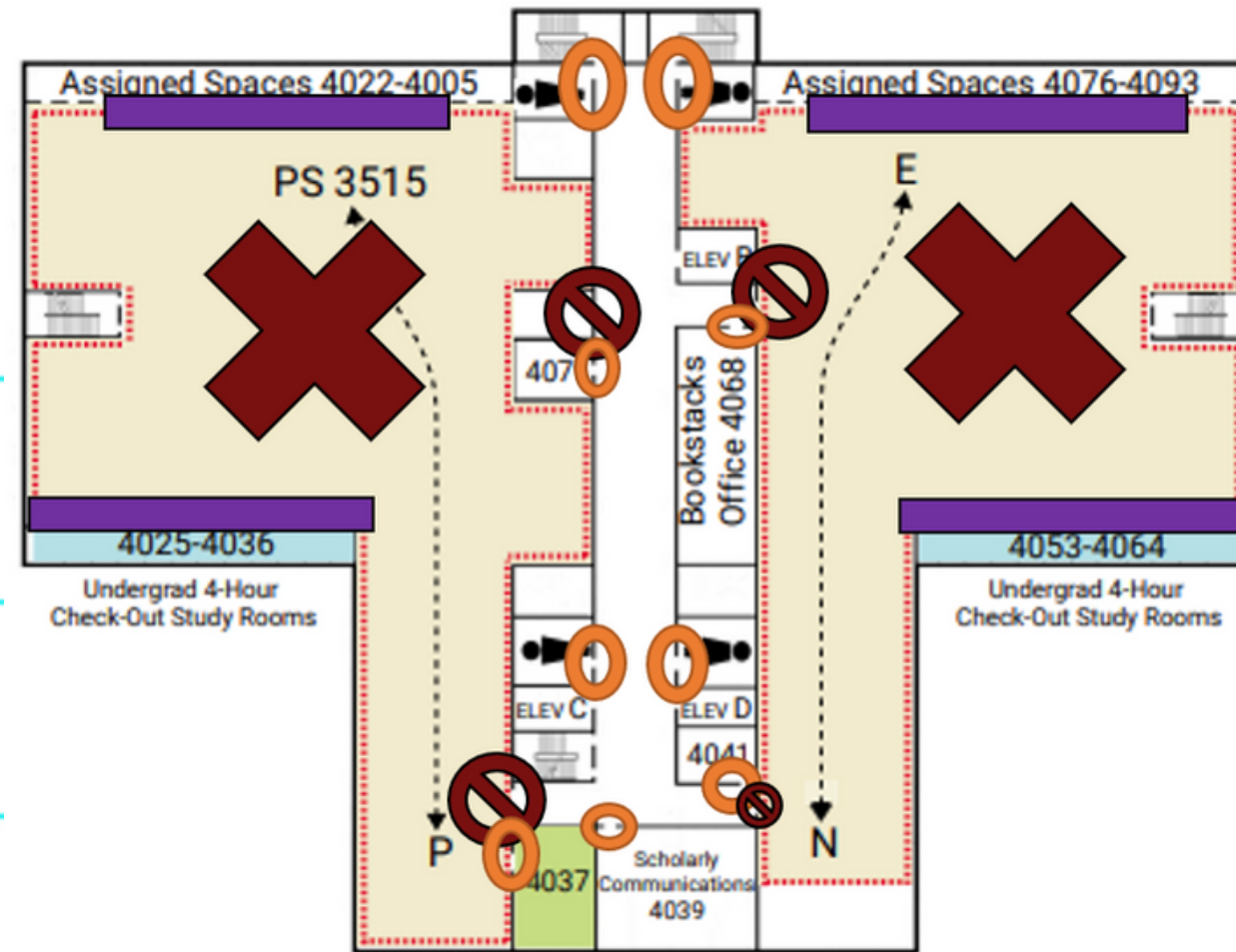
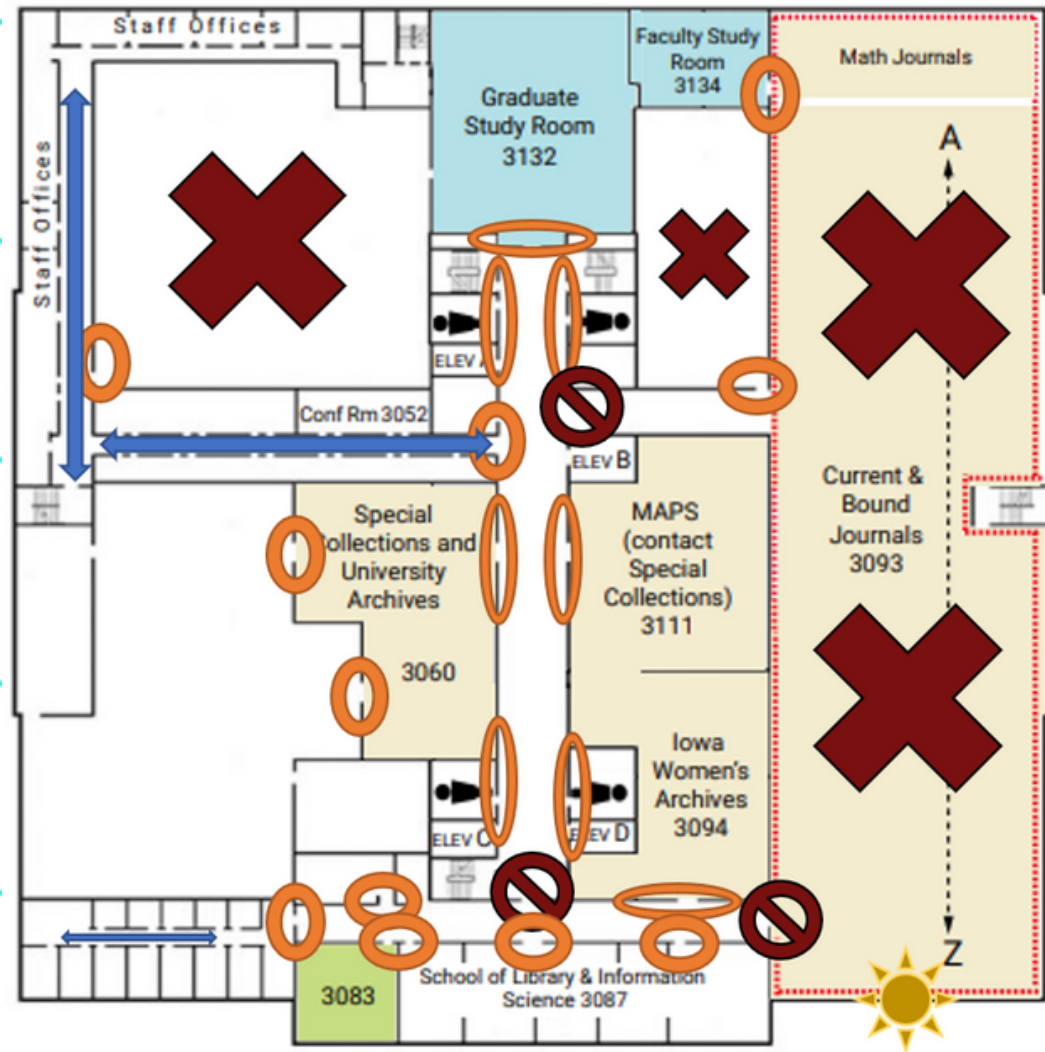
First Floor

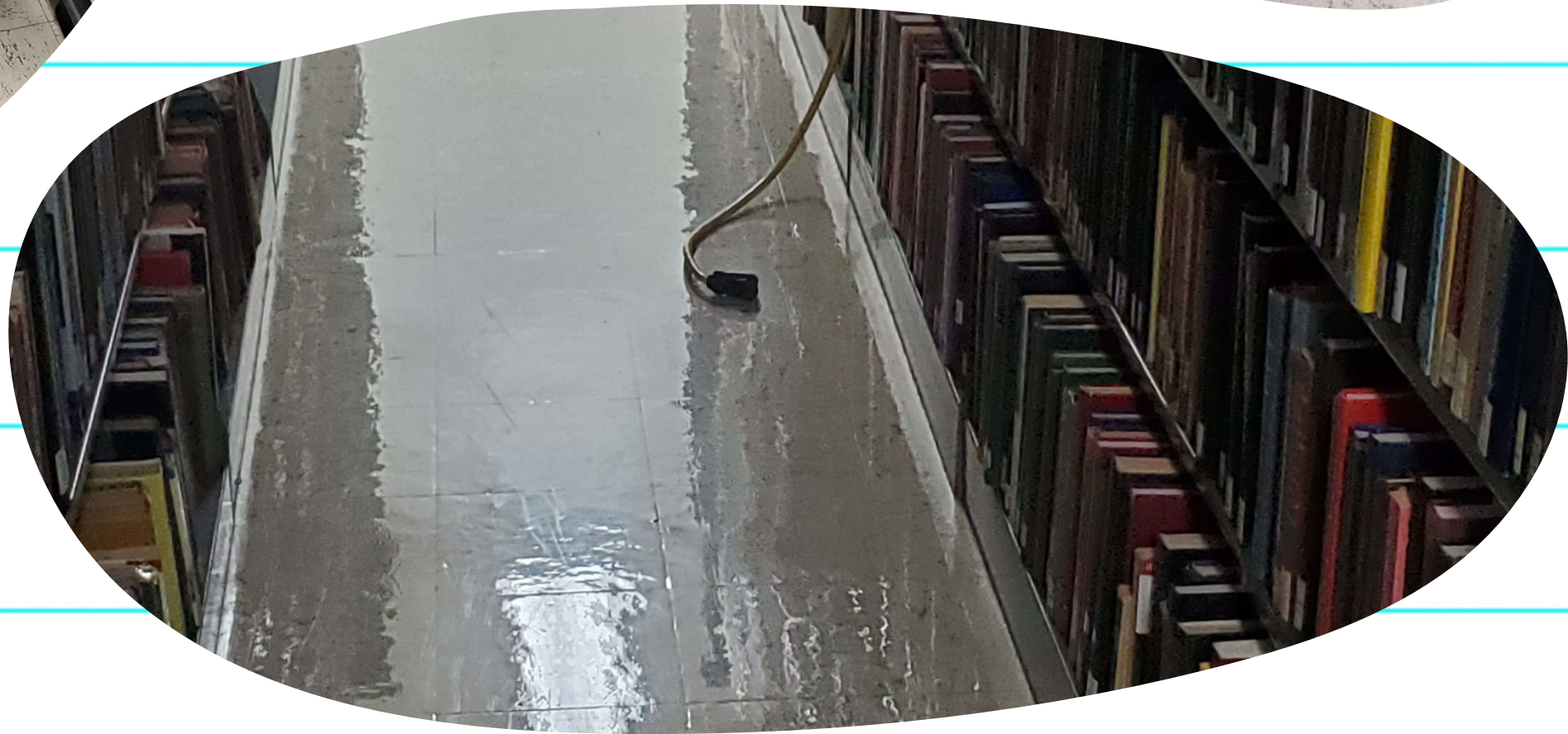
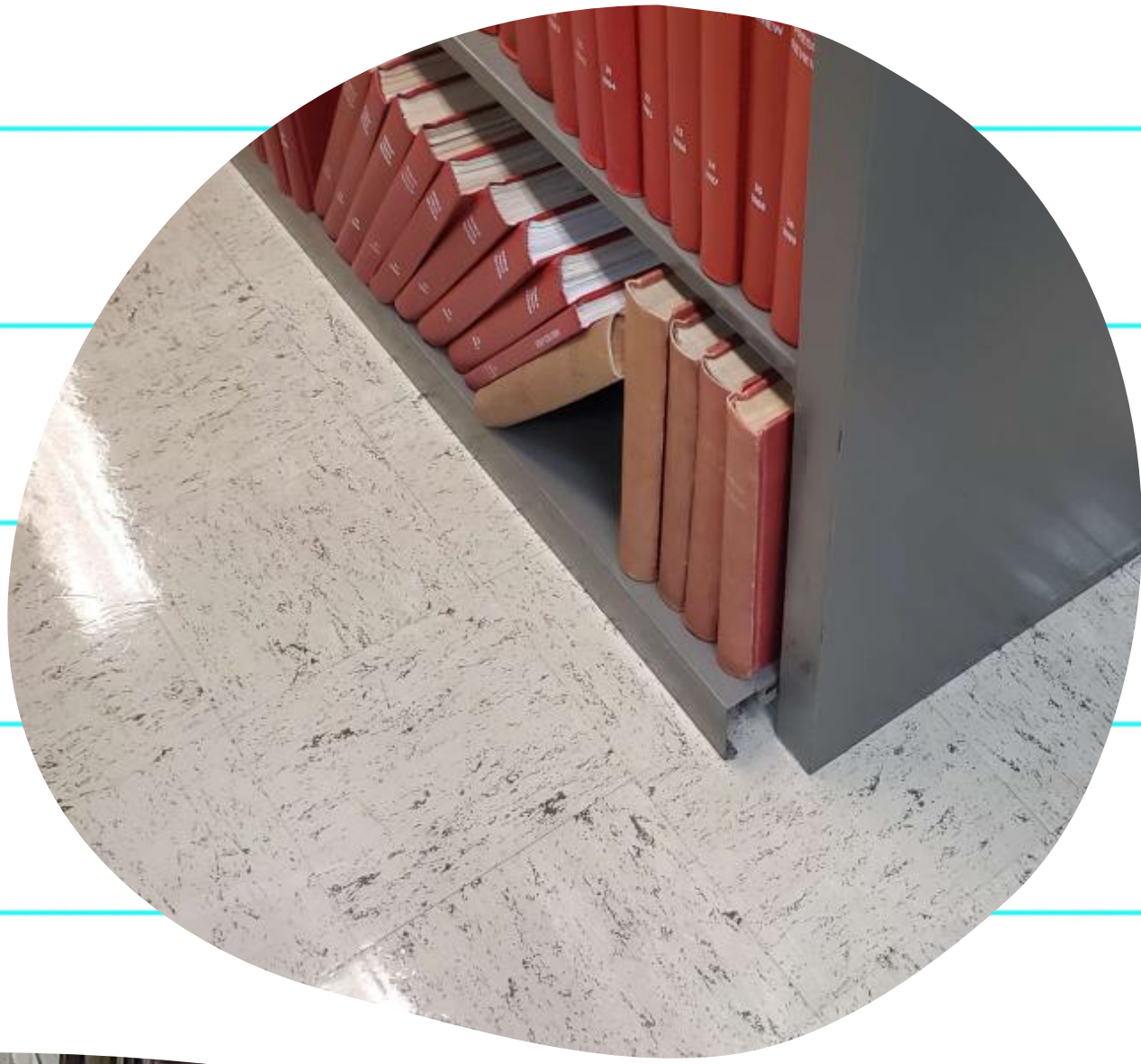
- Parking lot near the North Lobby has that under-bridge area that is hard to move through (gold x).
- Doors needing to be changed to automatic/sliding doors (orange circles).
- Have a service desk and hold shelf near one of the entrances (we picked the South Lobby as a prime spot).
- Use Front Street as a pick-up/drop-off area as well as for accessible parking for the library.
- Create a large wheelchair ramp at the South Lobby entrance.
- Reference Collection (red X) area is very dark (needs more lighting).
 - Use warm lighting for lightbulbs throughout the building instead of sharp tungsten lights.
- Remove those black rubber floor dividers and create a smooth transition between floorings (purple bar).
- Have a dedicated space for disabled patrons/students to study, socialize, and find materials while being accessible to them.



Second Floor

- All chairs and tables should be replaced with smooth edged furniture on wheels, so it would be easier to move obstacles as well as lighten impact if someone bumps into the furniture.
- Bookstacks needs more lighting in between them (red X's).
 - Bookstacks in general are inaccessible due to spacing; signs discussing bookstack inaccessibility should be made of higher quality and should be placed downstairs first thing so patrons wouldn't have to travel all the way to an inaccessible space only to discover that it's inaccessible.
- Once again, classrooms and bathrooms need sliding/automatic doors.
- The reflection room is lovely! But let's change it a bit so it looks less like a psych ward.
 - Also consider adding another reflection room for those who stim loudly.
- Remove doorways/doors to create ease of access (red cross-out circles).
- Clearer signage for SEAM office.





CONCLUSIONS

New Furniture 

New Doors

Increase Signage 

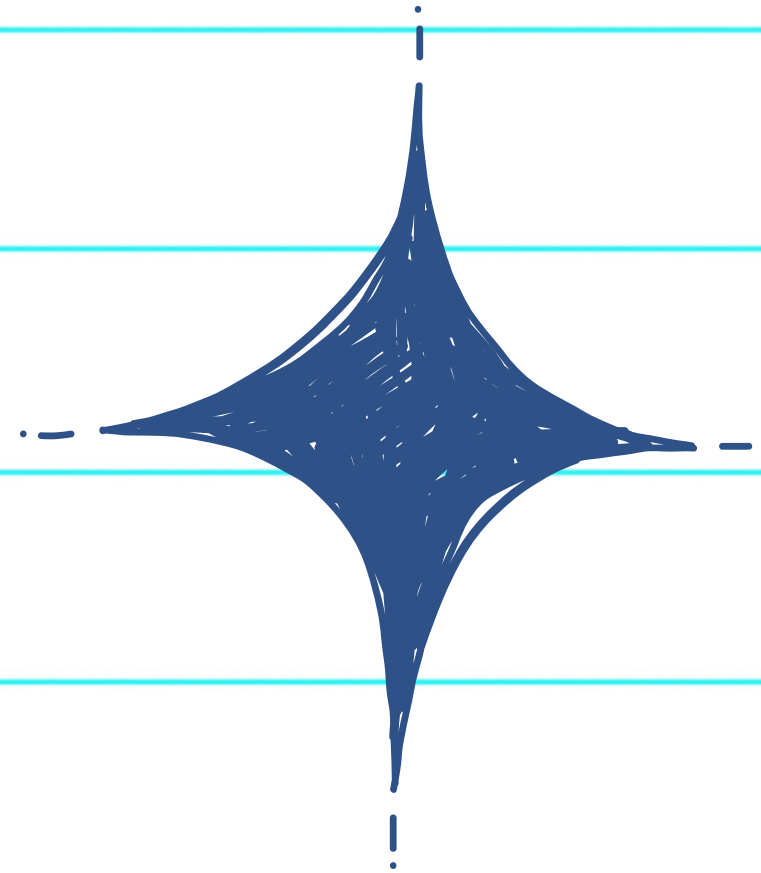
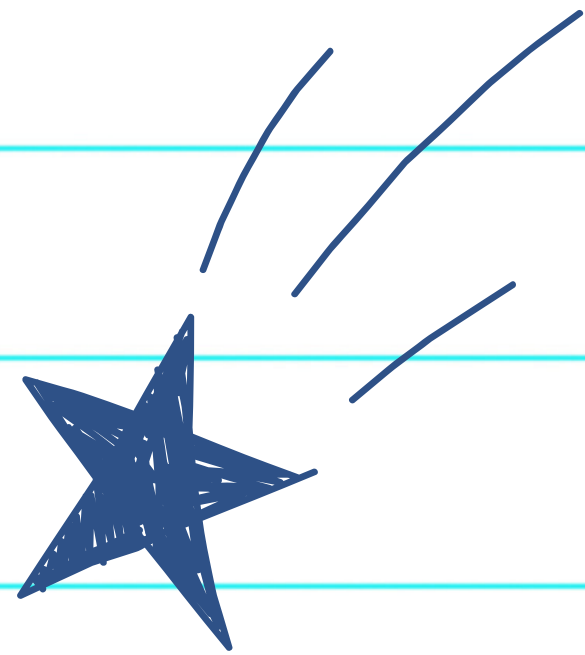
Better Ramps

Better Lighting 

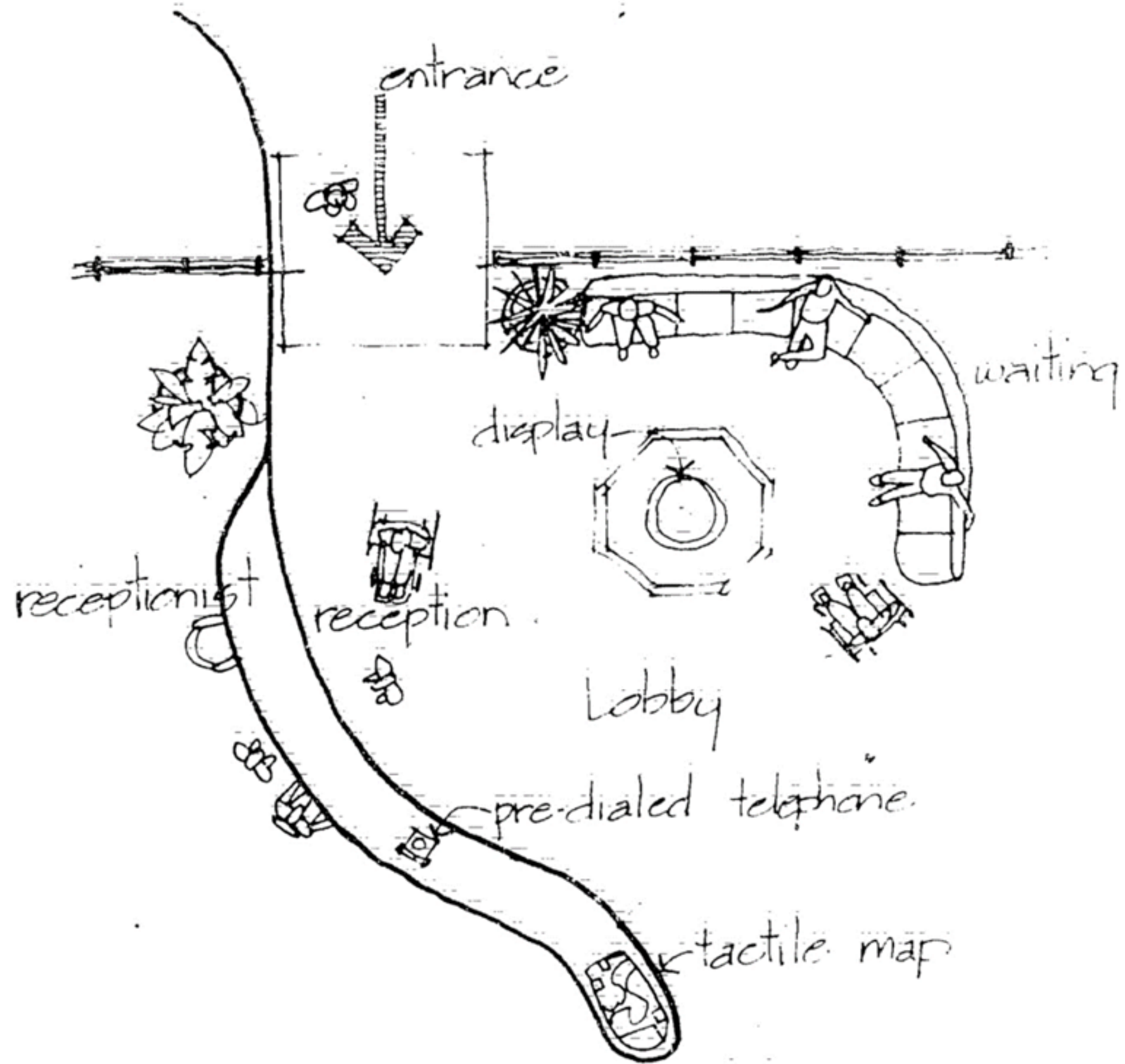
Handrails &
Smooth Corners



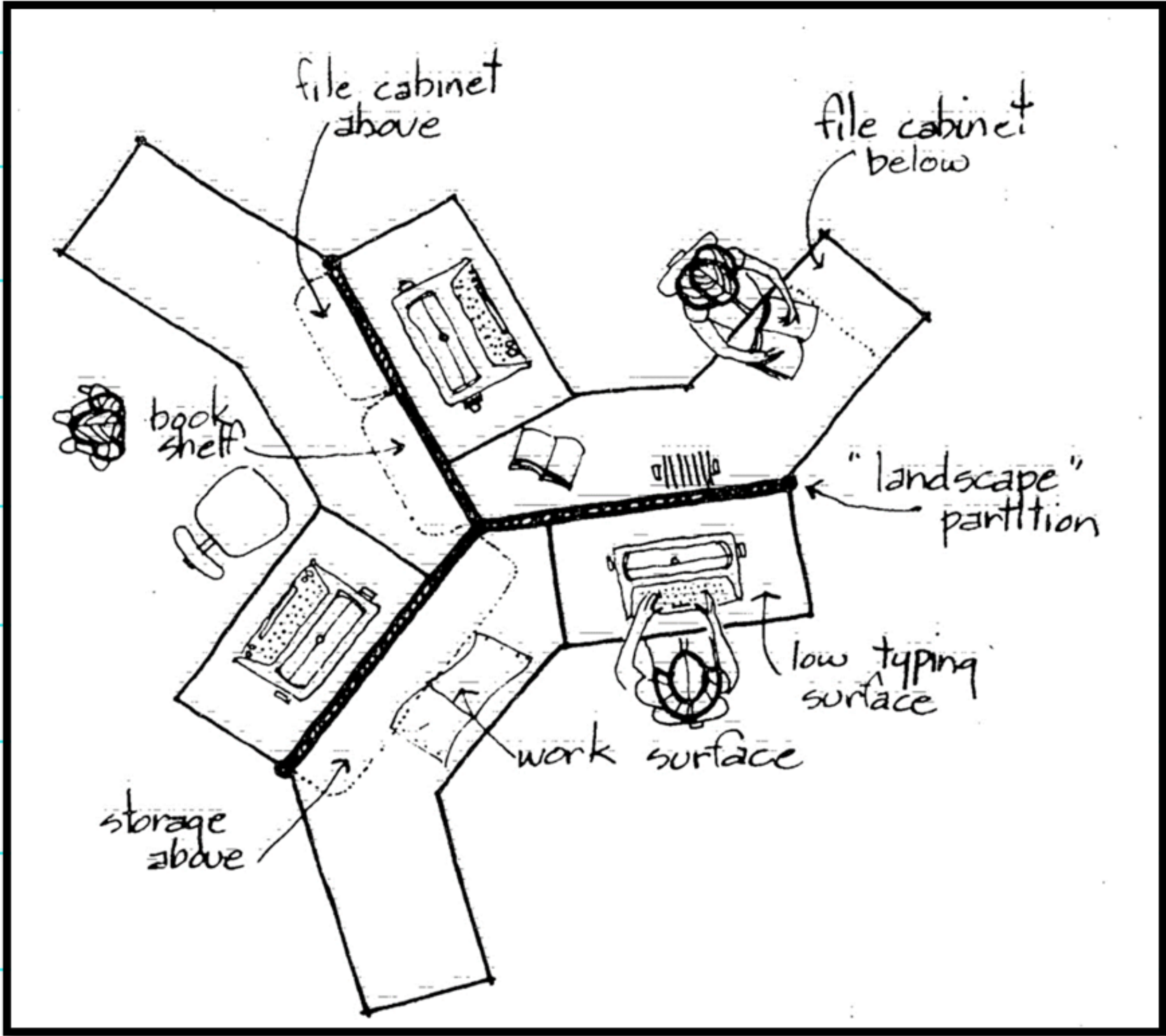
$$x = \frac{-b \pm \sqrt{b^2 - 4ac}}{2a}$$

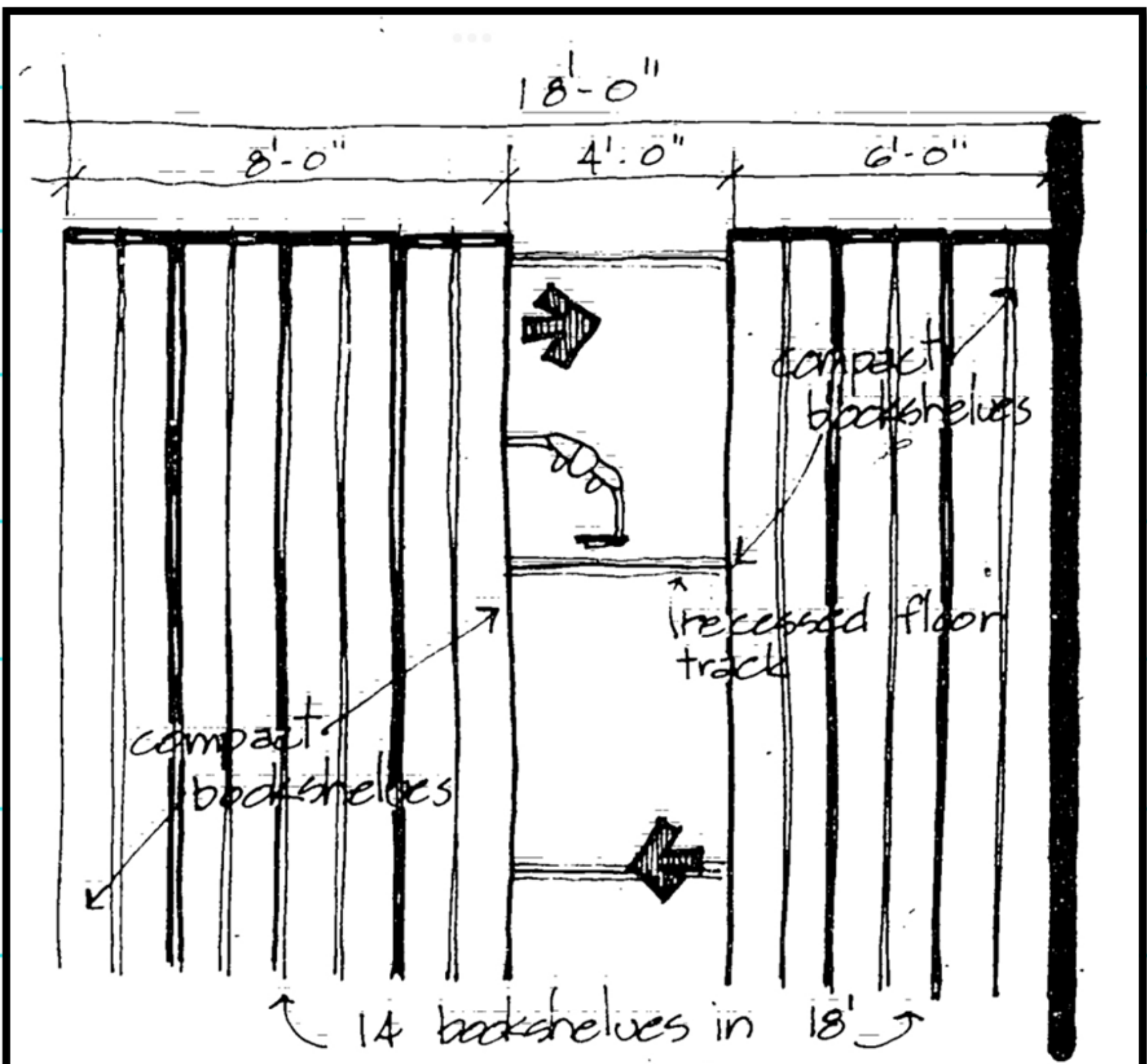


IDEAS & SUGGESTIONS

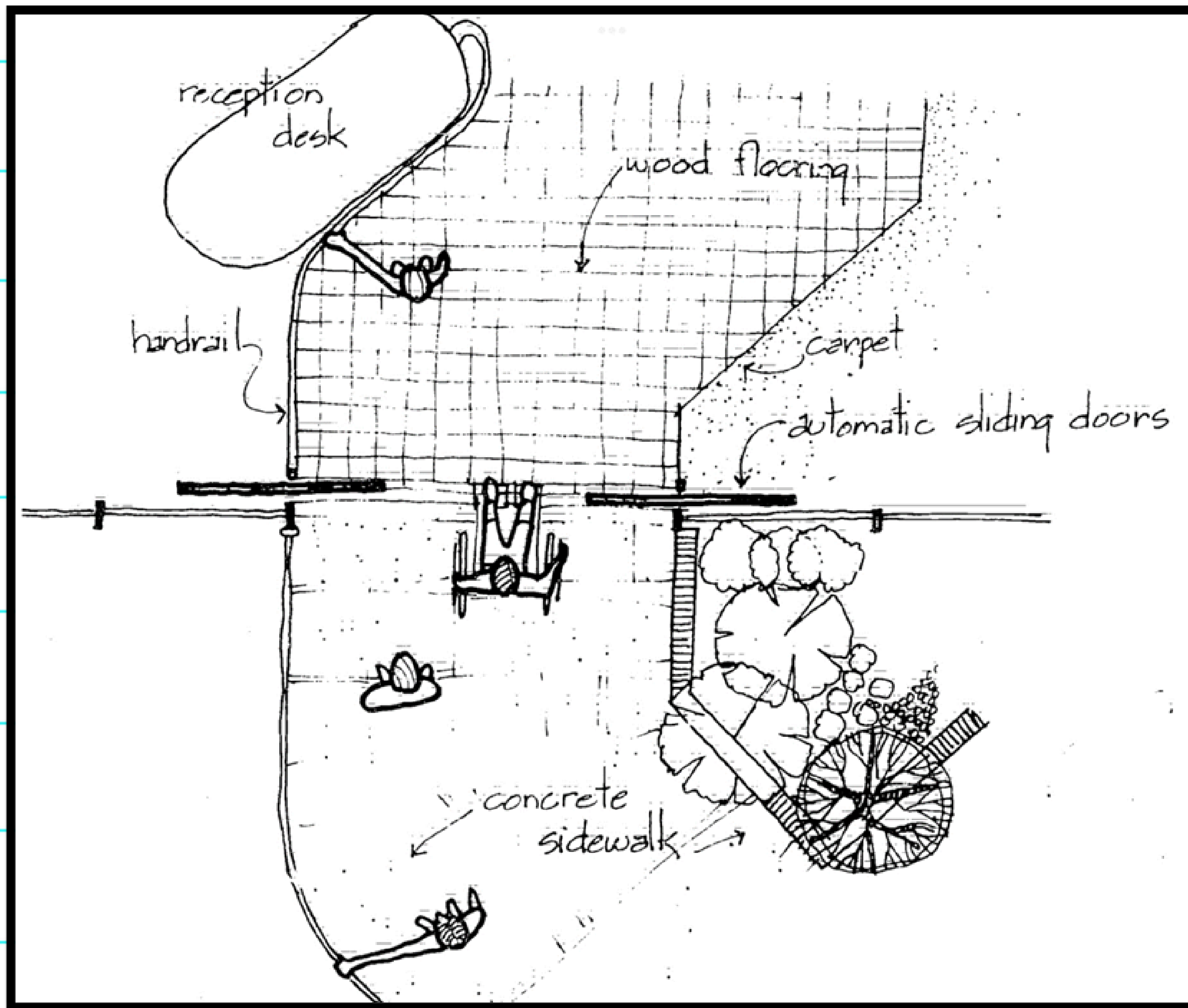


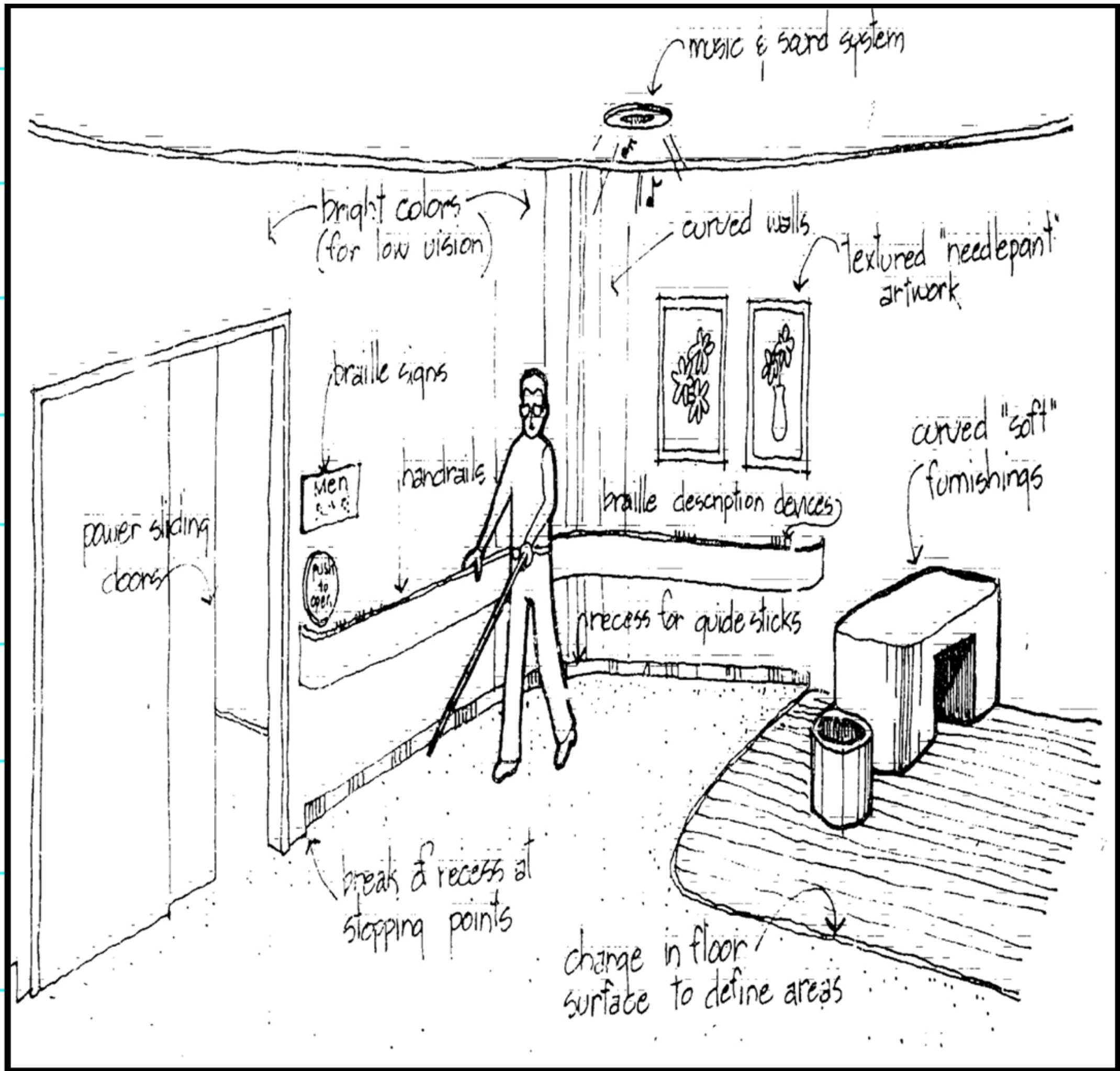
Entrance & Lobby
plan

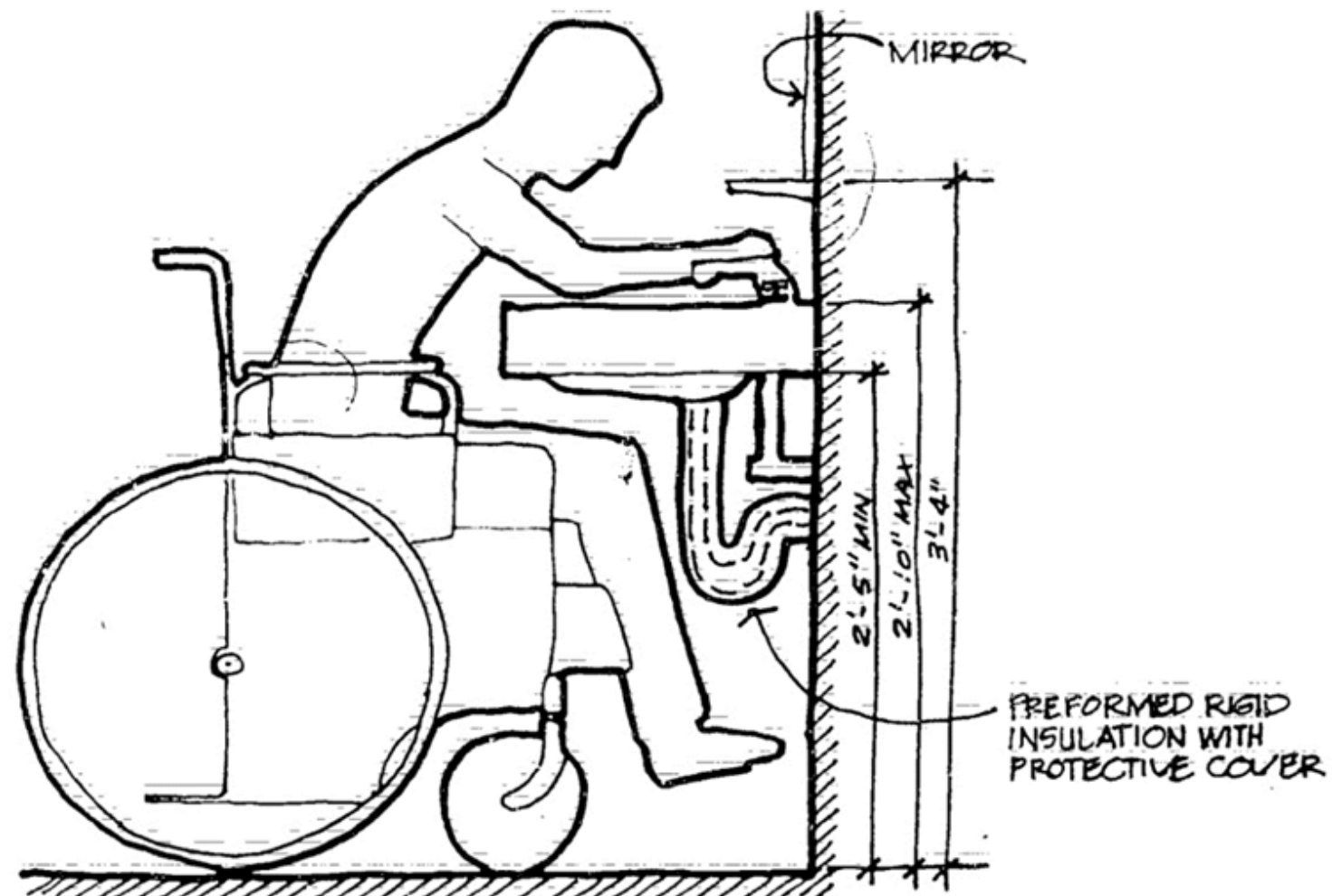




Compact Shelving
plan



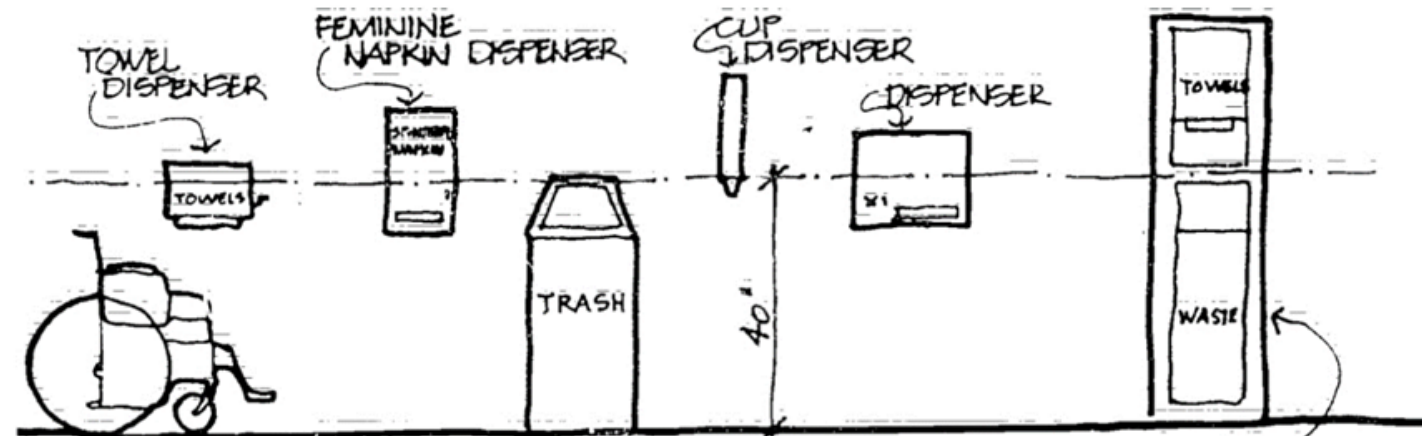
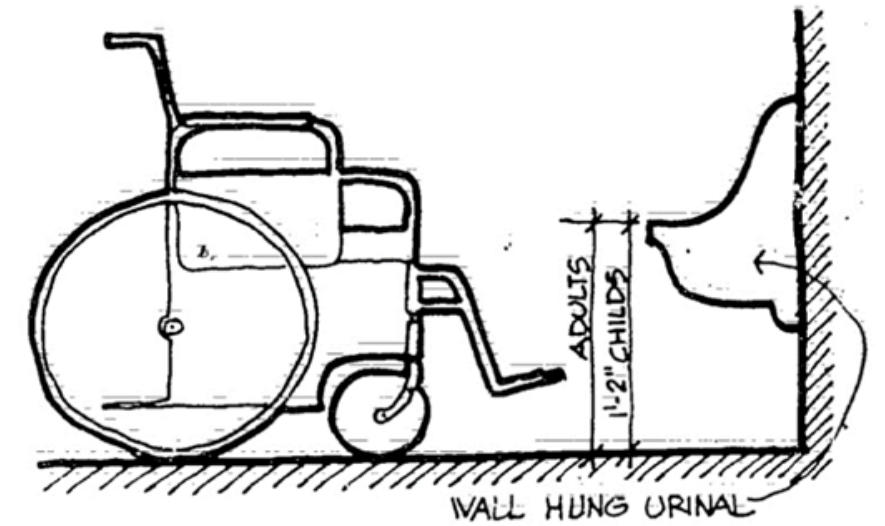
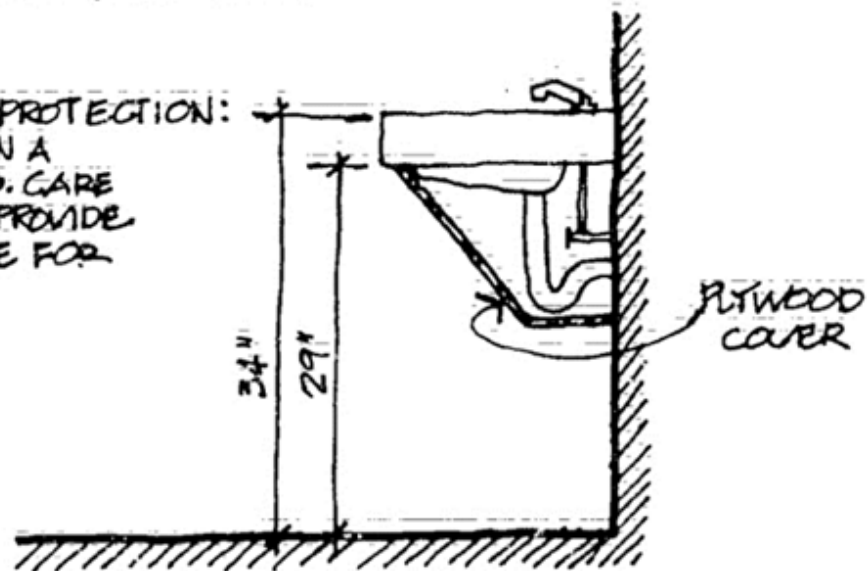




PREFORMED RIGID INSULATION WITH PROTECTIVE COVER

IF HOT WATER EXCEEDS 120°, SUPPLY AND DRAIN LINES MUST BE INSULATED TO PREVENT BURNING PERSONS WITH NO SENSATION IN THEIR LEGS.

ALTERNATE METHOD OF PROTECTION: INCLOSE PLUMBING IN A PROTECTIVE HOUSING. CARE SHOULD BE TAKEN TO PROVIDE ADEQUATE CLEARANCE FOR WHEELCHAIRS.



THIS TYPE NOT ACCEPTABLE UNLESS SEPARATE TOWEL DISPENSER IS ALSO INSTALLED AT 40"

PERSONAL TIPS & CONCLUSIONS

| CURVES | VERSATILITY | SIGNAGE | SERVICES |
|---|--|--|--|
| Arrange spaces in smooth curves instead of sharp-edged boxes. | Get furniture that allows patrons to transform the space to fit their needs. | Label everything! (At least have clear signs with Braille on all the rooms) | Place the reference desk near the entrance and offer helpful items/services (noise-cancelling headphones, lockers, book pick-up, etc.) |

RESOURCES & WORKS CITED

"Planning Barrier

Free Libraries"

by Charles A.

Moss Jr.

PDF

ADA & Sandler

Checklists

ADA PDF

Sandler PDF

Universal Design

Principles

Article & Photo

